



# MICHELLE

WORDS AND MUSIC BY  
JOHN LENNON AND PAUL McCARTNEY

MODERATELY



MI - CHELLE, MA BELLE, THESE ARE WORDS THAT GO TO-GETH-ER



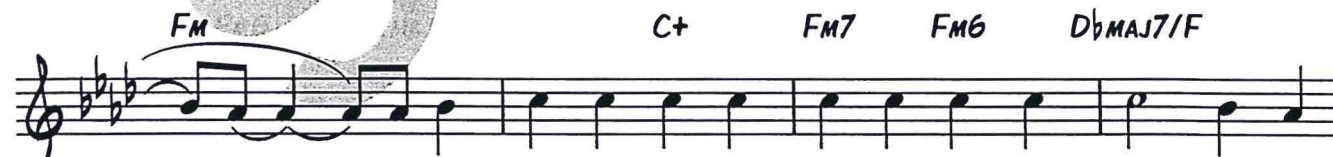
WELL, MY MI-CHELLE.. MI - CHELLE, MA BELLE, SONT DES MOTS QUI  
MI - CHELLE, MA BELLE, SONT DES MOTS QUI



VONT TRES BIEN EN - SEMBLE, TRES BIEN EN-SEMBLE I LOVE YOU, I LOVE YOU, I  
VONT TRES BIEN EN - SEMBLE, TRES BIEN EN-SEMBLE. I NEED TO, I NEED TO, I



LOVE YOU, THAT'S ALL I WANT TO SAY. UN - TIL I FIND A WAY, -  
NEED TO, I NEED TO MAKE YOU SEE. OH, WHAT YOU MEAN TO



I WILL SAY THE ON - LY WORDS I KNOW THAT YOU'LL UN - DER -  
ME UN - TIL I DO, I'M HOP - ING YOU WILL KNOW WHAT I



STAND. MEAN. I LOVE YOU \_\_\_\_\_